



WWW.ROFFS.COM



FISHING@ROFFS.COM



321.723.5759



@ROFFSFISHING

## ROFFS™ FISHERIES OCEANOGRAPHIC ANALYSIS

FOR THE WACHAPREAGUE TO CURRITUCK INSHORE AREA (LAT./LONG.)

UPDATED ON THURSDAY 02 JULY 2020 FOR THURSDAY P.M. & FRIDAY FISHING ONLY

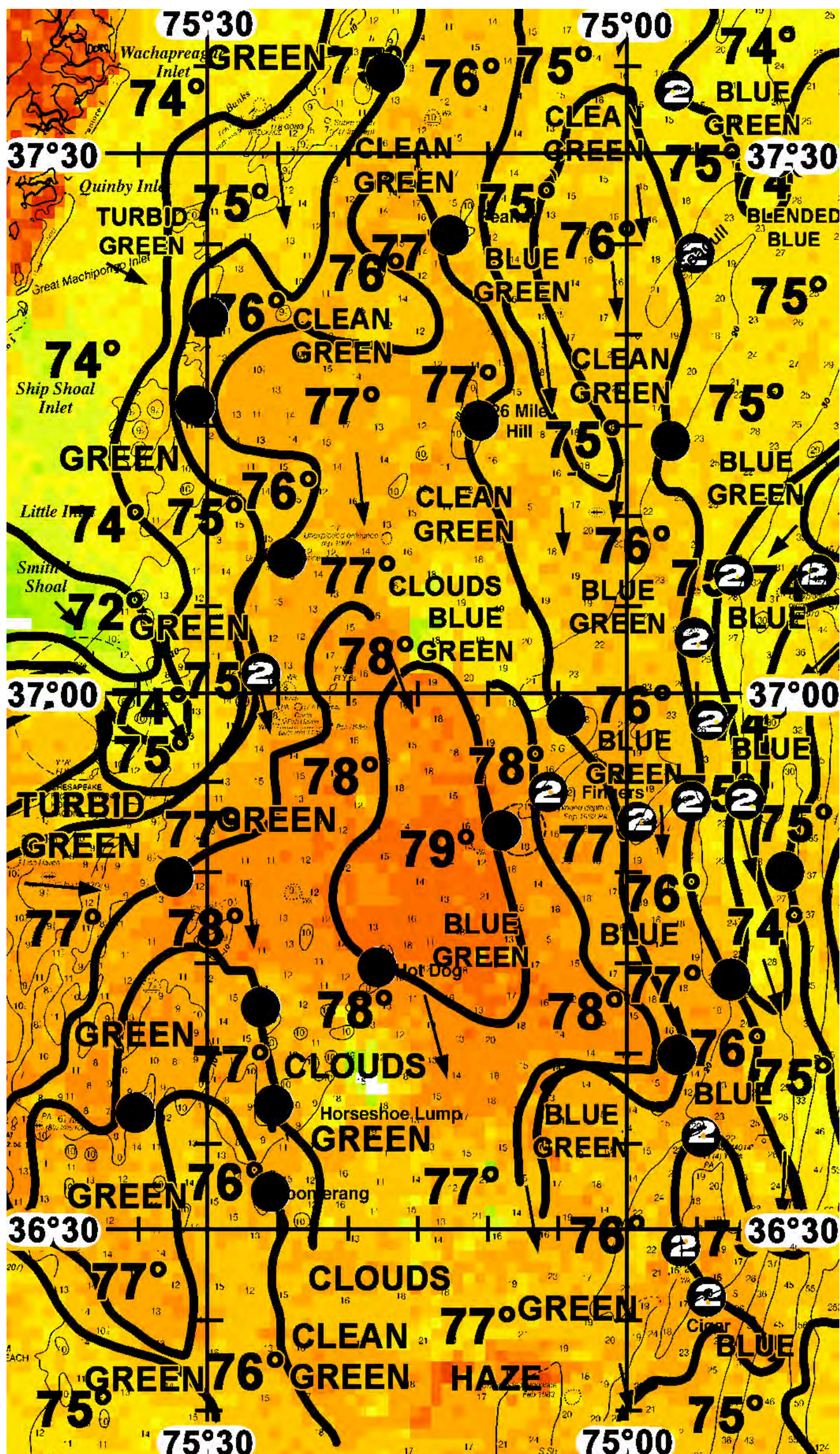
Based on a multiple factor oceanographic analysis, the indicated areas (hot spot dots) on the analysis mark the areas where bait concentrations are expected and where fishing action is expected to be better compared with other areas. Numbers inside of the hot spot dots indicate the number of consecutive days that we have seen favorable oceanographic conditions in that location. These areas are not based on dock rumors or hearsay fishing reports, they are based on oceanographic knowledge and expertise. You should start fishing where you recognize other signs of good fishing conditions near these marked areas (ie. rips/slicks, weed lines, birds, etc). It is very important to use your sea surface temperature (SST) gauge to locate the boundaries of the water masses, which are outlined in black. PLEASE REMEMBER, rather than trying to find water masses based on the absolute temperature values shown on the map, search for the relative change in SST where the water mass boundaries occur. Arrows indicate the main current direction. 1 fathom = approximately 6 feet. Afternoon SST is likely to be 1.0°F or more WARMER than indicated by the morning SST calibration on this analysis. NUMBERS IN PERENTHESIS AFTER LOCATIONS ARE NUMBER OF DAYS THAT SPOT HAS BEEN FAVORABLE. **Fathom Science SST and Ocean Color/Chlorophyll Forecasts now included on final two pages.**

We were only able to pick out most of the important features and follow some of the conditions the past two days to increase your chances for mainly tuna, wahoo, dolphin, sharks and maybe white marlin action. We did have some trouble with clouds and haze, but were able to pick out the better conditions to increase your chances for finding bait and fishing action. **FULL MOON WARNING:** Many times the fishing action slows during the daytime during a full moon as the fish are feeding at night. Experience suggests that the better fishing action, especially with tuna, during the full moon is at first light and last light of the day. Thus, be sure to get to the fish before first light so that you can start trolling early. The fish will bite before the human eye senses the light. When chunking during the full moon, be sure to position your baits much deeper in the water column, especially at night. The inshore water has warmed considerably during the last week, so we expect and had reports of yellowfin, bluefin and mahi inshore as far as 20-30 fathoms and over your better bottom structure.

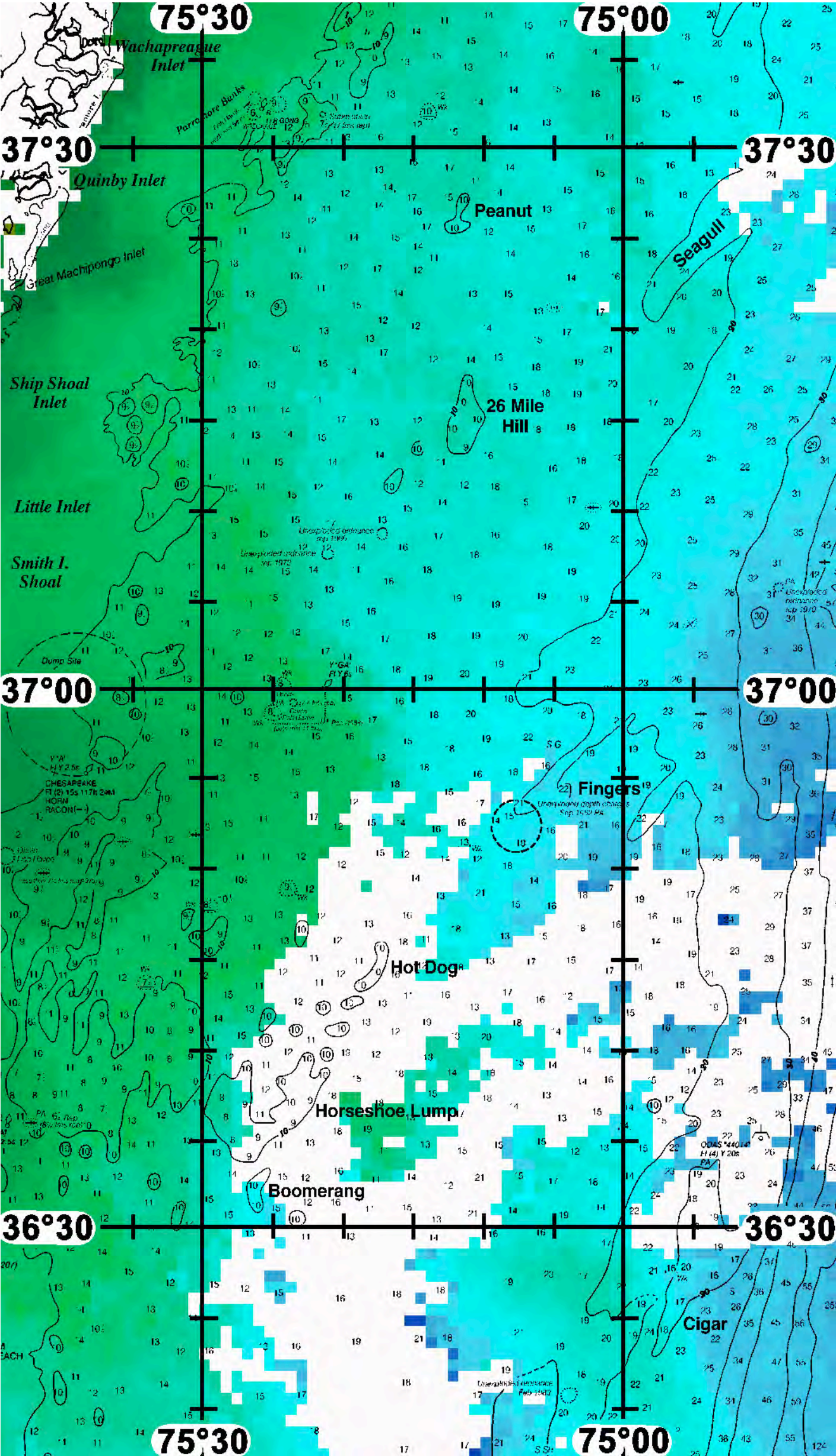
Bottom line is coming out of the northern charted area we suggest you may want to start over the green to bluer-green 75°F to 76°F to 77°F edges over the Peanut to the 26 Mile Hill near 75°12'W & 37°25-26'N extending south to near 75°10-11'W & 37°14-15'N. Then fish east to the SeaGull and 20 fathom curve along the 75°F to 76°F greener to bluer water edges favorable fro two days enar 74°56'W & 37°33-34'N (2) south to near 74°55'W & 37°24-25'N (2) south to near 74°56'W & 37°14'N. However, the BETTER conditiosn may be a bit farther south along the blue-green to bluer stronger 74°F to 75°F to 76°F water mass boudnary over the 30 fathom curve from near 74°53-54-55'W & 37°04-05-06-07'N (2) and fish into the tip of Norfolk Canyon near 74°47-48'W & 37°05-06'N (2) and south along the 30-40 fathom curve to the Fingers near 74°52-53'W & 36°55-58'N (2) and farther down the 30-40 fathom curve and the same water mass boundareis near 74°50-53'W & 36°45-50'N. On your way offshore try the Fingers and warmer water mass boundary (76°F to 77°F to 78°F) near 74°59'W & 36°53-54'N (2) to near 75°05-07'W & 36°53-54-55'N (2) to 75°10'W & 36°53-54'N. Farther south we also like the Cigar area alogn the blue-green to bluer 75°F to 76°F edges near 74°54-55'W & 36°25-30-35'N (2). You also may want to try the Hot Dog and green to bluer-green 78°F to 79°F warmer edges near 75°18'W & 36°44-45'N. You will also increase your chances for fishing action over the 10 fathom curve and lumps as indicated and the cooler greener inshroe to warmer cleaner green to blue-green offshore edges, but mostly for bluefin tuna and sharks, you will find the better conditiosn for mahi, yellowfin tuna and wahoo and maybe even white marlin offshore of 10-15 fathoms usually.

**ROFFS™ Summer Hours: Mon – Fri. 9:00 am – 7:00 pm EDT (sometimes later based on demand) with analysis order deadline before 3pm. We are now open on Saturdays 9AM to 4PM (sometimes we close earlier based on demand) analysis order deadline is 10:00am on Saturday. Thank you for not sharing this analysis with non-paying anglers. Remember you can order and/or purchase your fishing analyses from our website (<http://www.roffs.com/>) or by email ([fishing@roffs.com](mailto:fishing@roffs.com)). Verbal updates are free while on the water between 10:30 AM and 11:59 AM (eastern time). WE WILL BE CLOSED, MONDAY, JULY 6th for Independence Day Observation.**







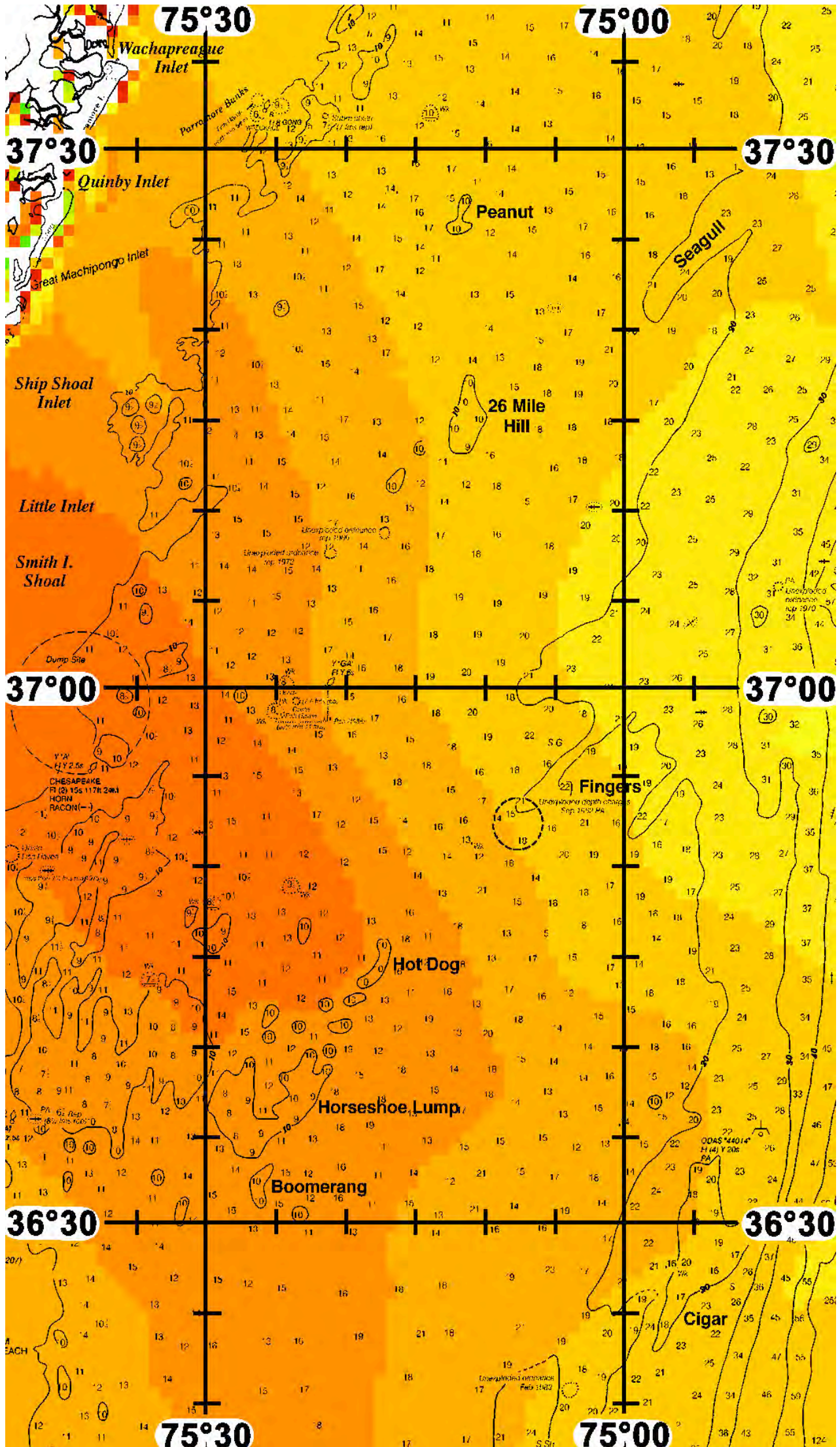






# FATHOM SCIENCE

## SST FORECAST for TOMORROW MORNING FISHING







# FATHOM SCIENCE

## OCEAN COLOR/CHLOROPHYLL FORECAST for TOMORROW MORNING

