



WWW.ROFFS.COM



FISHING@ROFFS.COM



321.723.5759



@ROFFSFISHING

**FISHERIES OCEANOGRAPHIC ANALYSIS (LAT./LONG.)
FOR THE WILMINGTON CANYON TO THE NORFOLK CANYON OFFSHORE
UPDATED ON SATURDAY 02 SEPTEMBER 2023 FOR SATURDAY P.M. & SUNDAY FISHING**

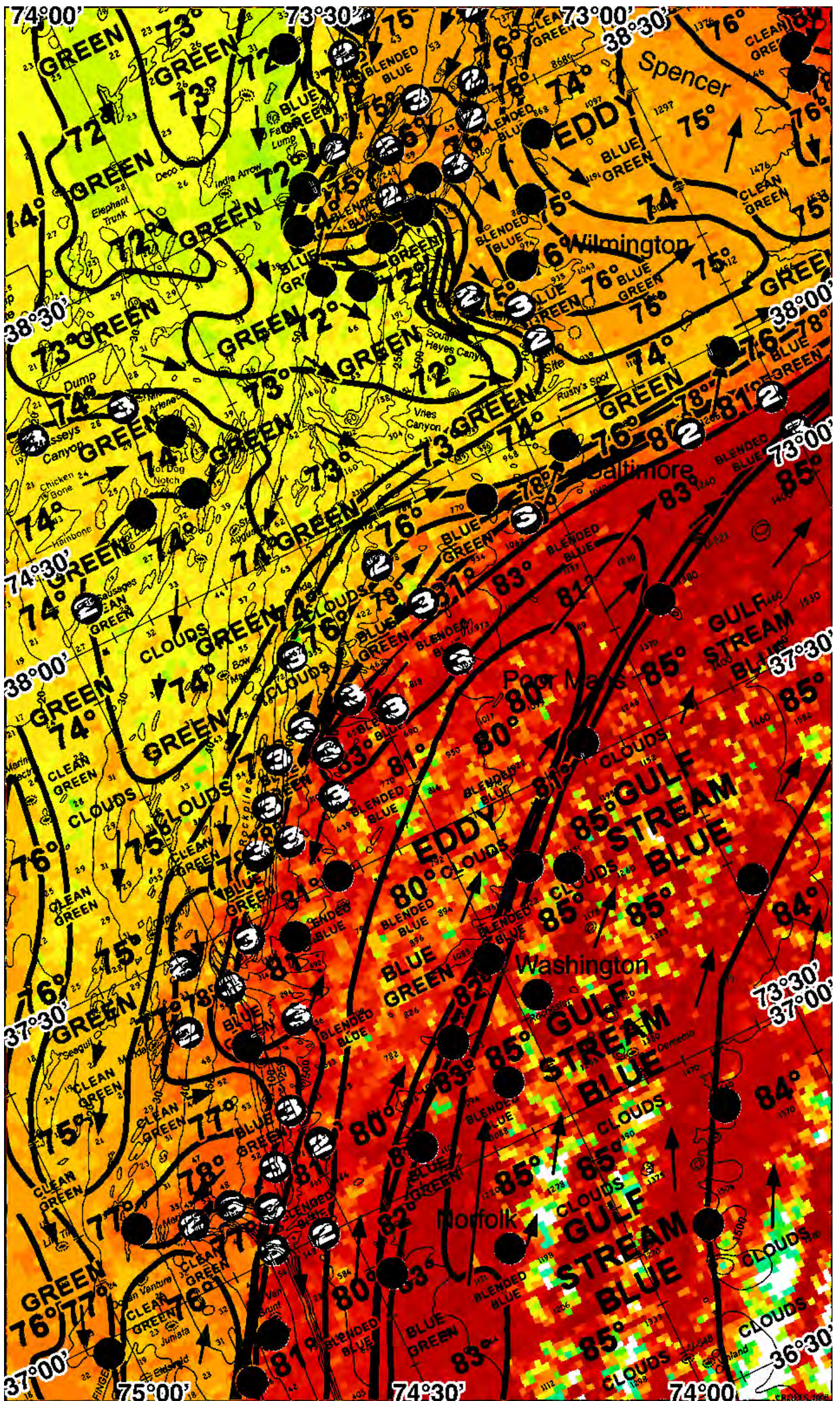
Based on a multiple factor oceanographic analysis, the indicated areas (hot spot dots) on the analysis mark the areas where bait concentrations are expected and where fishing action is expected to be better compared with other areas. Numbers inside of the hot spot dots indicate the number of consecutive days that we have seen favorable oceanographic conditions in that location. These areas are not based on dock rumors or hearsay fishing reports, they are based on oceanographic knowledge and expertise. You should start fishing where you recognize other signs of good fishing conditions near these marked areas (ie. rips/slicks, weed lines, birds, etc). It is very important to use your sea surface temperature (SST) gauge to locate the boundaries of the water masses, which are outlined in black. PLEASE REMEMBER, rather than trying to find water masses based on the absolute temperature values shown on the map, search for the relative change in SST where the water mass boundaries occur. Arrows indicate the main current direction. 1 fathom = approximately 6 feet. Afternoon SST is likely to be 1.0°F or more WARMER than indicated by the morning SST calibration on this analysis. NUMBERS IN PARENTHESIS AFTER LOCATIONS ARE NUMBER OF DAYS THAT SPOT HAS BEEN FAVORABLE. **We now provide cloud-free SST and ocean color/chlorophyll data from our new partner Fathom Science™ for at 6am forecast for the next day. This data is cutting-edge, high resolution, cloud-free modeled data that has been evaluated and validated by ROFFS™ along with other oceanographic scientists and proven to be the most accurate cloud-free data available to guide you in the right direction to increase your chances for fishing action. The cloud-free data will not be as accurate as the real time satellite imagery, but it will guide you to the general area for the better features, especially when it is cloudy. For more information please visit <https://www.roffs.com/faqs/>**

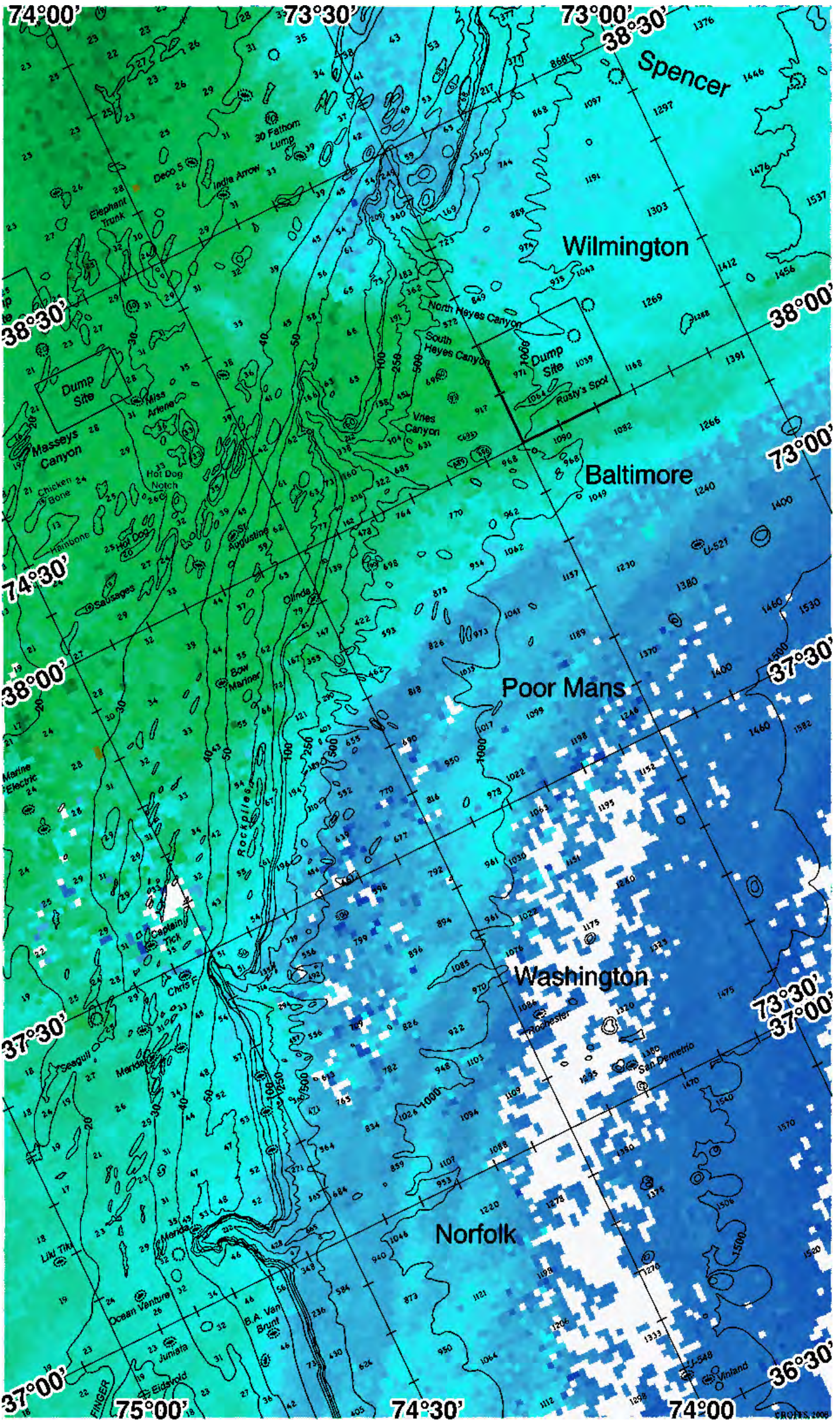
This area mostly cleared off pretty nicely today and we were able to use mainly late morning to afternoon imagery and follow some of the features the past 3-4 days to increase your chances for tuna, mahi, wahoo, marlin and swordfish action. We have included a nice and clear updated ocean color/chlorophyll image from this afternoon so you can see where the bluer and greener water is located (white = clouds). This time of year we still rely on the ocean color/chlorophyll images to locate the better water masses to fish, so PLEASE consult the satellite ocean color image to locate the cleaner bluer water especially for marlin and the better water masses. Notice with the passing of Tropical Storm Idalia to the south, it has mixed and cooled the majority of this offshore water by 2-3°F in places. Main observations for this area to notice is the northeast where the large clockwise rotating eddy is centered southeast of Hudson Canyon in 1100-1200 fathoms and is pulling up and pushing larger amounts of warmer bluer mixed Gulf Stream filament water into the Bank from Hudson Canyon to Toms Canyon to Carteret Canyon for the best of it, but also related bluer 74°F/75°F to 76°F filament water down inshore as far as 40 fathoms and southwest into Lindenkohl to Spencer and now into and west of Wilmington Canyon. There is a larger counter-clockwise eddy centered east of Wilmington Canyon in 1100 fathoms. IN the south notice again the Gulf Stream has pushed north and inshore again with direct Gulf Stream bluer and warmer water pushed in east and southeast of Poor Mans Canyon over 500 fathoms to 1000 fathoms for favorable options and also now north into the southern Dump Site and 1000 fathoms east to southeast of Baltimore Canyon but also into Washington to Norfolk Canyon 100-250-500 fathoms with blended blue water into the 80°F range. There is plenty of good fishing left this summer and areas to fish, we will talk about only what areas we think are best. There remains a lot of greener water inshore especially between Poor Mans and Wilmington Canyon. Recent reports area that the action between Wilmington and Toms is slow and scattered a few tuna but not many marlin, but there has to be some fish in that water. We have heard reports that the marlin action has improved in the south, not details given. Notice also the two Gulf Stream eddies, one over the 1000 fathoms east-northeast of Washington Canyon and there is another coming up from the south now over 1000 fathoms southeast of Norfolk Canyon. Take a look at the ocean color satellite shot for a better look. We did have some trouble with scattered clouds in the southern canyon areas offshore.

Spencer Canyon to Poor Mans: In this area, we like two general locations. First the Wilmington to Spencer Canyon, starting as far inshore as 35-40 fathoms where the bluer, warmer and stronger 72°F/73°F to 75°F to 76°F edges are near 73°36-40-44'W & 38°25-30-32'N (2) and then work your way into Wilmington Canyon over the 100 fathom tip to east and west wall and bluer warmer water near 73°28-30-32'W & 38°24-25-30'N (2) and to the 100 fathom curve east of Wilmington toward Spencer near 73°17-20-23'W & 38°25-30-32'N (3) and into Spencer's 70-100 fathom tip OR inshore over 40 fathoms from Lobster Claw and south near 73°28-30'W & 38°45-47'N (2). Additional favorable conditions occur east of South and North Heyes Canyon into the northern to northeast Dump Site area along the green to bluer 72° to 73°F to 75°F/76°F edges near 73°20-25-28'W & 38°09-10-15'N (3). Then Second good option it so head south where the Gulf Stream is pushing up looking for green to bluer-green to blended blue 74°F/75°F to 78°F to 80°F to 81°F to even 83°F pushing south of Baltimore Canyon to the Poor Mans Canyon better over 500-1000 fathoms near 74°00-05'W & 37°49-50'N (3) to near 73°48-50'W & 37°50-55'N then east to slightly northeast to the 1000 fathom curve to just about the southern Dump Site area near 73°25-30-35'W & 37°54-58'N (3) and east as indicated. Farther south to southeast you go the warmer and bluer the water will get, even the main Gulf Stream 84°F to 85°F water is in this southeast area. Inshore, lots of greener water but try the Massays Canyon to Hot Dog Notch to Miss Arlene wreck area for the warmer 73°F to 74°F breaks.

Poor Mans to Norfolk Canyon: IN the south you there are plenty of decent options where you find the main Gulf Stream and Gulf Stream filament bluer and warmer edges. Look for greener to bluer and 77°F/78°F to 80°F/81°F edges from Rockpiles to South Poor Mans Canyon near 74°12-15-20'W & 37°35-40-43'N (3) the 60-/70 to 100 to 200 fathoms and fish east to the 500 fathom curves and lumps and warmer water near 74°00-10'W & 37°40-45'N (3) and southwest along the 80-100 to 250-500 fathoms near 74°47-52'W & 37°35'N (3) to near 74°10-14'W & 37°30'N and the 461 Lump. Equally as favorable conditions occur over Washington Canyon 100-500 fathoms and southwest along the similar Gulf Stream mixed filament water and 77°F to 80°F/81°F boundary over the 800 Square to southeast corner near 74°25-30'W & 37°25-29'N (3) to near 74°30-32'W & 37°20'N and east to the 500 fathom curves as indicated. You may want to start inshore over the 40 fathom curve from Chris F wreck and south. Farther south, the Norfolk Canyon also looks good from the 100 fathom tip to as far inshore as 30-40 fathoms and fish the north wall of Norfolk to the 100 fathom corners near 74°42-47'W & 37°05-06'N (3) to the warmer bluer water near 74°38-40'W & 37°01-05-07'N (3) and northeast along the 250-500 fathom curve as indicated. Further offshore, you can actually catch the main western edges of the Gulf Stream and offshore eddy edges (80°F to 82°F to 85°F) pushing over the 1000-1200 fathoms from east of Norfolk Canyon near 74°10-15' W & 37°03-10'N extending northeast roughly along the 1000 fathom curve to east of Washington Canyon near 74°00-01'W & 37°15-17'N and then northeast over 1200 fathoms to the northeast as indicated. Notice the main western edges of the Gulf Stream may push off further by tomorrow as the other eddy pushes up. However, we anticipate the area from east of Poor mans to over Washington to Norfolk to remain favorable through Monday or Tuesday, if anything pulling off to 500 fathoms if the Canyons do not produce.

ROFFS™ Summer Hours: Mon – Fri. 9:00 am – 7:00 pm EDT please order before 2pm EDT. We are now open Saturdays 9:00 am – 4:00pm, please order by 9am EDT on Saturdays. Thank you for not sharing this analysis with non-paying anglers. Remember you can order and/or purchase your fishing analyses from our website (<http://www.roffs.com/>) or by email (fishing@roffs.com). Verbal (321-723-5759) and Text Updates available at 321-626-9766 10:30 AM EDT to 12 Noon EDT while on the water the next morning Monday-Saturday (we are CLOSED on Sundays). ROFFS™ will be CLOSED MONDAY, SEPT. 4th for LABOR DAY.

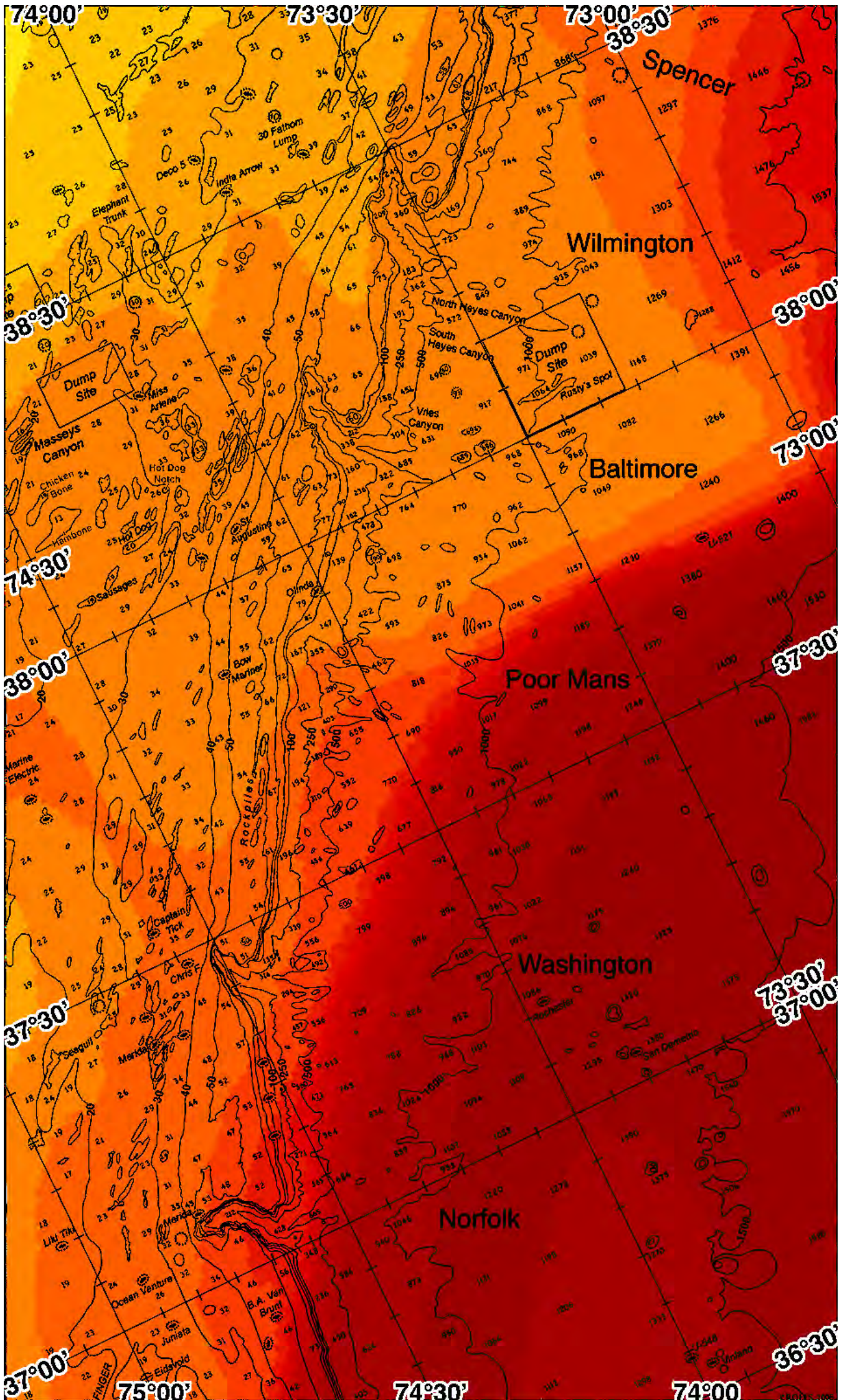






FATHOM SCIENCE

SST FORECAST for TOMORROW MORNING FISHING





FATHOM SCIENCE

OCEAN COLOR/CHLOROPHYLL FORECAST for TOMORROW MORNING

