



**FISHERIES OCEANOGRAPHIC ANALYSIS FOR THE
BEACH HAVEN TO OCEAN CITY (MD) INSHORE (LAT/LONG)
UPDATED ON THURSDAY 12 OCTOBER 2023 FOR THURSDAY P.M. & FRIDAY FISHING**

Based on a multiple factor analysis, the symbols (hot spot dots) mark the areas where bait concentrations are expected and where fishing action are expected to be better compared with other (non-marked) areas. These are not based on dock rumors or hearsay fishing reports. Fishing reports are stated as such. You should start fishing where you recognize other signs of good fishing conditions near these marked areas. It is very important to use your sea surface temperature (sst°) gauge to locate the boundaries of the water masses, which are outlined. Rather than trying to find water based on the absolute temperature values shown on the map, search for the relative change in sst where the water mass boundaries occur. Arrows indicate the main current direction. Numbers inside of the dots indicate the number of consecutive days that we have seen favorable conditions in that location. 1 fathom = approximately 6 feet. Afternoon SST is likely to be 1.0°F or greater than indicated by the morning calibration on this analysis. **NUMBERS IN PERENTHESES AFTER LOCATIONS ARE NUMBER OF DAYS THAT SPOT HAS BEEN FAVORABLE.**

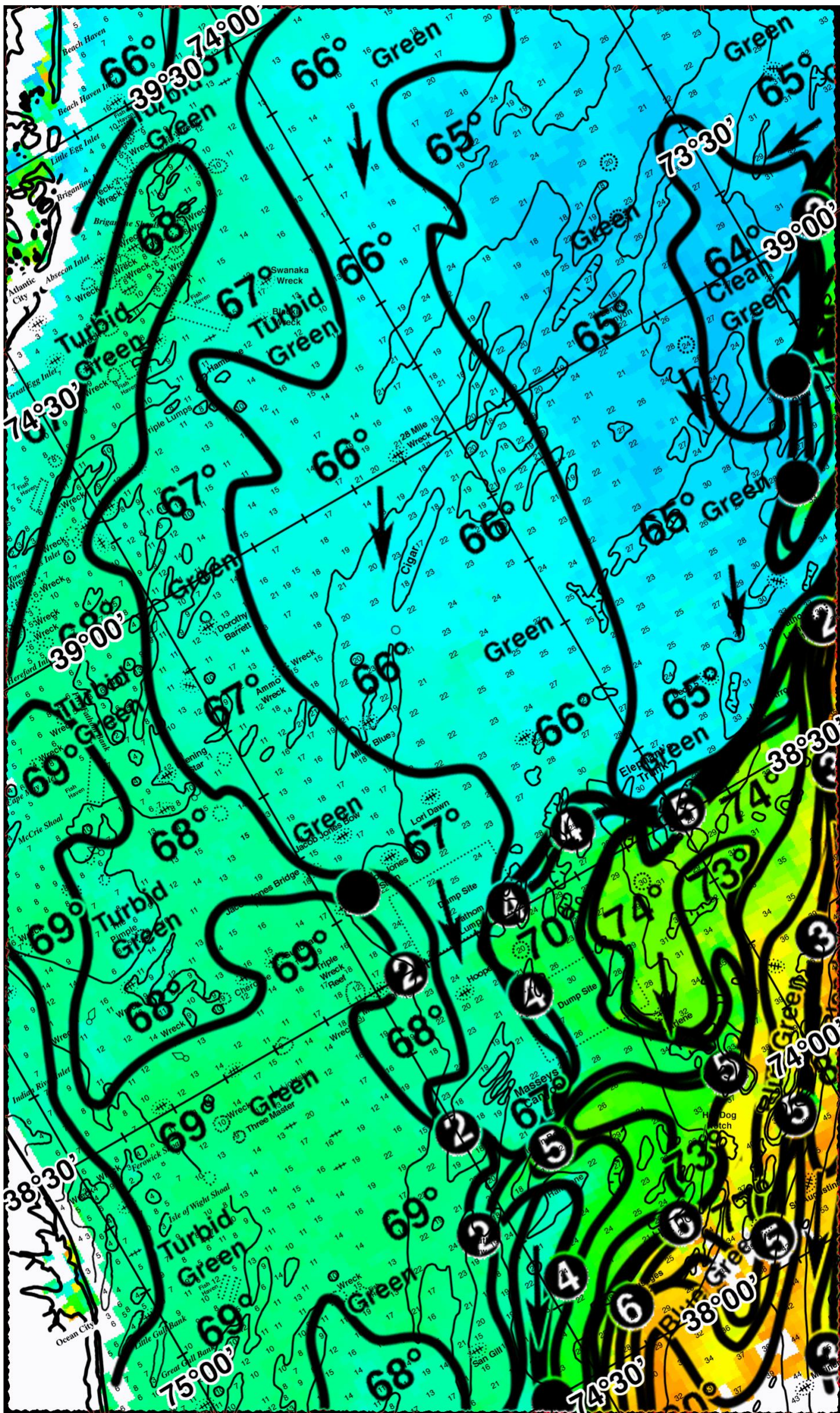
We now provide cloud-free SST and ocean color/chlorophyll data from our new partner Fathom ScienceTM for at 6am forecast for the next day. This data is cutting-edge, high resolution, cloud-free modeled data that has been evaluated and validated by ROFFSTM along with other oceanographic scientists and proven to be the most accurate cloud-free data available to guide you in the right direction to increase your chances for fishing action. The cloud-free data will not be as accurate as the real time satellite imagery, but it will guide you to the general area for the better features, especially when it is cloudy. For more information please visit <https://www.roffs.com/faqs/>

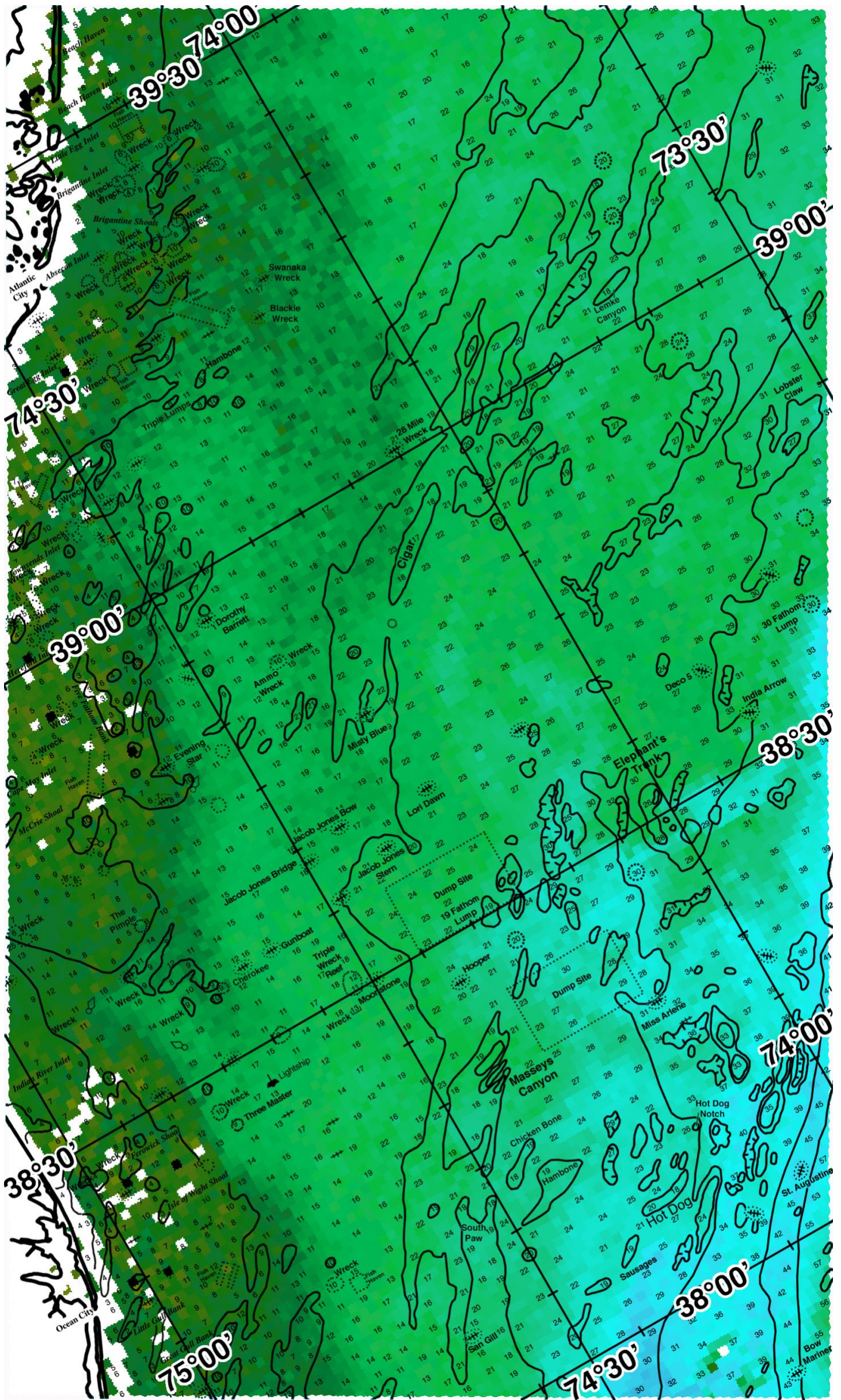
We were able to use this afternoon's high-resolution infrared sst° and MODIS/VIIRS/Sentinel Ocean color/chlorophyll composite satellite imagery for this analysis area to follow the oceanographic conditions for the past six days. However, persistent cloud cover has prevented us from observing the southern chart area. Overall, we have observed the leading edges of the larger Gulf Stream eddy formation leave this chart area pushing offshore of Tom's Canyon. However, another eddy formation appears to have formed over the past 24 hours (centered near 73°26'W & 38°14'N) helping to maintain warmer (70°F-75°F-78°F) blue green to blended blue water inshore over the 20-50 fathom depths from the Elephant Trunk to Massey's Canyon and the Sausages. We have also included an ocean color/chlorophyll composite image from this afternoon so you can get a sense of where the bluer and greener water is located (email only, white=clouds).

With this in mind, good chances for inshore tuna, dolphin, and wahoo fishing action have been observed inshore of Poor Man's Canyon (from near 74°16'W & 38°06'N (6) and 74°25'W & 38°04'N (6) to 74°30'W & 37°54'N (6)) where favorable (73°F-77°F-80°F) green to blue green/blended blue water mass boundaries have been observed for six days. You may also try fishing north of Poor Man's and inshore of Baltimore and Wilmington Canyons (from near 74°12'W & 38°02'N (5) and 74°04'W & 38°08'N (5) to 73°55'W & 38°18'N (3) and 73°46'W & 38°28'N (3)) where favorable (77°F-80/81°F) blue green/blended blue water mass boundaries have been observed for three to five days. These conditions suggest additional good chances for inshore fishing action to occur as well. If you were interested in heading further offshore, additional good chances for fishing action are likely to occur towards the 100 fathom ledges of Wilmington and Spencer Canyon (near 73°32'W & 38°18'N (3) and 73°22'W & 38°25'N (3) and 73°12'W & 38°30'N (3)) where favorable (73°F-79/80°F) green/blue green water mass boundaries have been observed for three days as well. However, keep in mind, this boundary will likely push further northeast off Spencer and Carteret Canyons over the next 24 hours as well. You may also try fishing the 75-100 fathom depths between Baltimore and Poor Man's Canyons (from near 73°56'W & 38°08'N (3) to 74°06'W & 37°54'N (3)) where warmer to cooler (80°F-74/75°F) blended blue to blue green water mass boundaries have been observed for three days as well.

Additional increased chances for fishing action are likely to occur towards the 30 fathom good bottom near the Lobster Claw (near 73°36'W & 38°45'N and 73°34'W & 38°52'N and 73°25'W & 39°00'N (3)) where relatively warm (74°F) filament water has been observed pushing inshore. A potential counter-clockwise center of rotation may be developing near the Lobster Claw, helping to pull some of this warmer water further inshore over the next few days.

ROFFSTM Fall Hours: Mon – Fri. 9:00 am – 5:00 pm EDT with analysis order deadline before 2pm Eastern. We are now closed on Saturdays until May 2024. Thank you for not sharing this analysis with non-paying anglers. Remember you can order and/or purchase your fishing analyses from our website (<http://www.roffs.com/>) or by email (fishing@roffs.com). Verbal updates are free while on the water between 10:30 AM and 11:59 AM (eastern time) Monday-Friday. **ROFFSTM Text Updates 321 626-9766 10:30 AM EDT to 12 Noon EDT.**

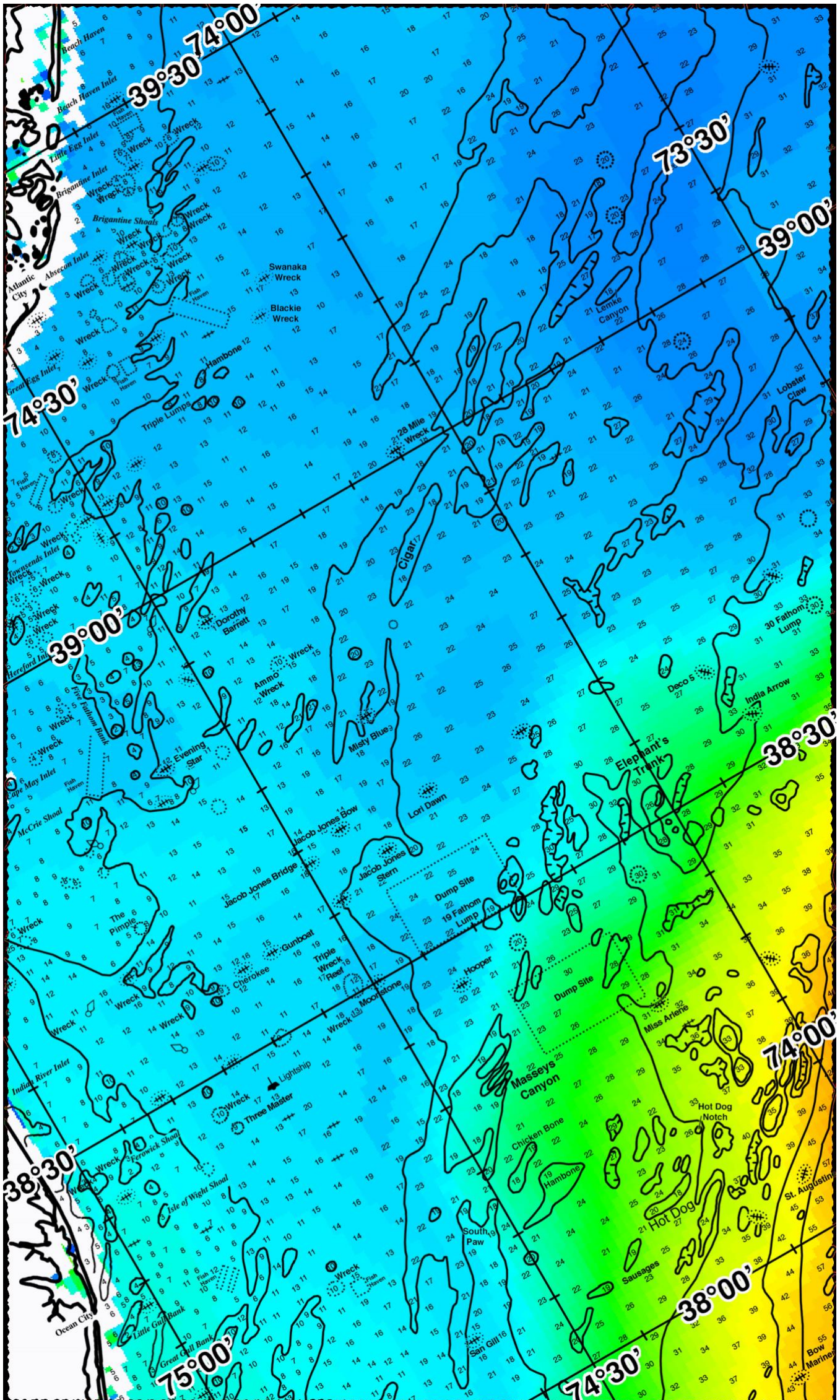






FATHOM SCIENCE

SST FORECAST for TOMORROW MORNING FISHING





FATHOM SCIENCE

OCEAN COLOR/CHLOROPHYLL FORECAST for TOMORROW MORNING

