



WWW.ROFFS.COM



FISHING@ROFFS.COM



321.723.5759



@ROFFSFISHING

FISHERIES OCEANOGRAPHIC ANALYSIS FOR THE TAMPA OFFSHORE AREA (LAT./LONG) UPDATED ON MONDAY 10 AUGUST 2020 FOR MONDAY P.M. AND TUESDAY FISHING ONLY

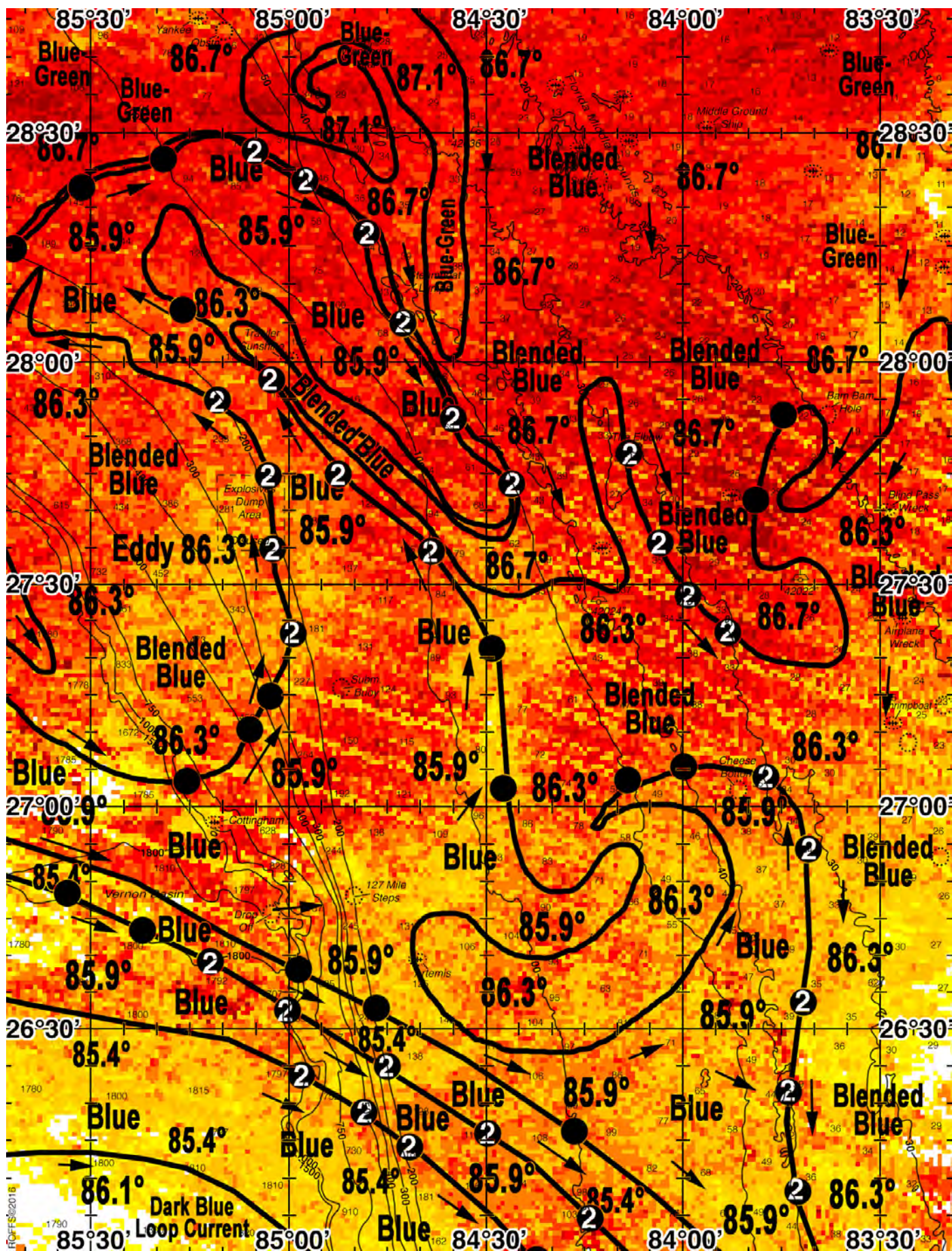
Based on a multiple factor oceanographic analysis, the indicated areas (hot spot dots) on the analysis mark the areas where bait concentrations are expected and where fishing action is expected to be better compared with other areas. Numbers inside of the hot spot dots indicate the number of consecutive days that we have seen favorable oceanographic conditions in that location. These areas are not based on dock rumors or hearsay fishing reports, they are based on oceanographic knowledge and expertise. You should start fishing where you recognize other signs of good fishing conditions near these marked areas (ie. rips/slicks, weed lines, birds, etc). It is very important to use your sea surface temperature (SST) gauge to locate the boundaries of the water masses, which are outlined in black. PLEASE REMEMBER, rather than trying to find water masses based on the absolute temperature values shown on the map, search for the relative change in SST where the water mass boundaries occur. Arrows indicate the main current direction. 1 fathom = approximately 6 feet. Afternoon SST is likely to be 1.0°F or more WARMER than indicated by the morning SST calibration on this analysis. NUMBERS IN PERENTHESIS AFTER LOCATIONS ARE NUMBER OF DAYS THAT SPOT HAS BEEN FAVORABLE. **Fathom Science SST and Ocean Color/Chlorophyll Forecasts now included on final two pages.**

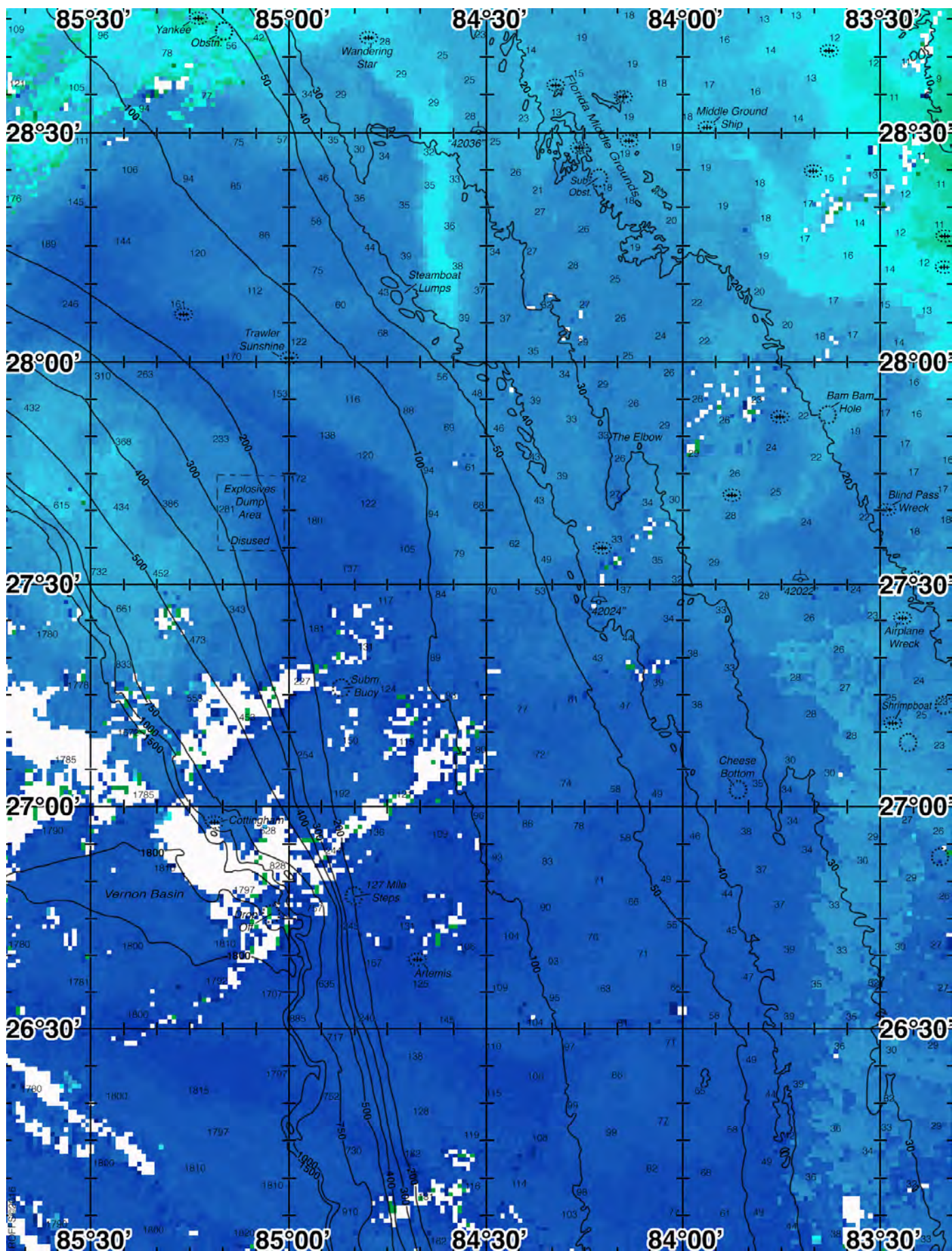
We were able to provide this update of the ocean conditions using a combination of high-resolution SST imagery from this morning along with ocean color/chlorophyll imagery from yesterday afternoon/evening and we have again included an ocean color image derived from chlorophyll imagery in order for you to see the true surface water colors in this area. **We always believe that there is no substitution over real time satellite data. We continue to provide sea surface temperature (SST) and ocean color/chlorophyll modeled data from our new partners at Fathom Science. While its not perfect, this data is cutting-edge, high resolution, cloud-free modeled data that has been evaluated and validated by ROFFS™ and other oceanographic scientists and proven to be the most accurate cloud-free data available anywhere to guide you in the right direction, when completely cloudy, to increase your chances for fishing action over other areas. Please visit the FAQs to read more about the ROFFS™/Fathom Science™ partnership on our web site at <https://www.roffs.com/faqs/>. We have also included modeled forecast charts of both SST and Chlorophyll at the end of the analysis. They provide a modeled look as to what the ocean conditions you will find at 6am tomorrow morning.** Overall, we continue to observe the counter-clockwise circulation of an eddy feature centered towards the Box area towards 85°20'W & 27°35'N that appears to continue to pull cleaner blue water north/northwestward off of the Loop Current circulation and over the 100+ fathom depths towards the Submerged Buoy area and offshore towards the area east/northwest of the Box. The main circulation of the dark blue Loop Current water remains over the southwestern portion of this area along with a band of relatively cooler blue water circulating clockwise along with it along its perimeter. We do continue to observe an abundance of cleaner blended blue to blue water in this area suggesting good overall chances for fishing action with tuna, wahoo, dolphin and billfish are likely to happen particularly where we have observed favorable conditions for multiple days now.

With this in mind, on your way offshore the northeastern edge of the finger cleaner blended blue water is likely to provide relatively good chances for fishing action where we observed these conditions for two days now towards the Elbow and southeastward over the ledges from 84°08'W & 27°48'N (2) to 84°04'W & 27°35'N (2) to 83°59'W & 27°29'N (2) to 83°53'W & 27°24'N (2). West of the Elbow and northwestward over the 40-50 fathom ledges southwest and west of the Florida Middle Grounds the northeastern leading edge of the cleaner band of blue water is also likely to provide action particularly from 84°27'W & 27°43-44'N (2) to 84°35'W & 27°53'N (2) to 84°42-43'W & 28°05'N (2) and also from 84°47-48'W & 28°18'N (2) to 84°58'W & 28°24'N (2) to 85°05'W & 28°28'N (2). Offshore southwestward closer to the Box area the edges cleaner blue water circulating around the eastern side of the eddy may also provide action where we observed these conditions for two days now from 84°39'W & 27°35'N (2) to 84°53'W & 27°45'N (2) to 85°02'W & 27°58'N (2) and also from 85°00'W & 27°23'N (2) to 85°02'W & 27°35'N (2) to 85°02'W & 27°45'N (2) to 85°10-11'W & 27°55'N (2).

Southward, towards the southeastern side of the Vernon Basin area and southeastward inshore the northeastern edges of the band of relatively warmer blue water is likely to provide action particularly where we observed favorable conditions for two days now from 85°12'W & 26°39'N (2) to 85°00'W & 26°32'N (2) to 84°45'W & 26°26'N (2) to 84°30'W & 26°17'N (2) to 84°15'W & 26°06'N (2). Continuing southward over the ledges, the northeastern edge of the band of cooler blue water circulating around the perimeter of the main circulation of the Loop Current may also provide action again particularly where we observed these conditions for two days now from 84°59'W & 26°24'N (2) to 84°49'W & 26°19-20'N (2) to 84°42-43'W & 26°16'N (2). Closer inshore, the eastern inshore edge of the cleaner and cooler blue water is likely to provide action on your way offshore towards the 30 fathom ledges east of the Cheese Bottom area and offshore southward towards the 40 fathom ledges from 83°48'W & 27°05'N (2) to 83°41'W & 26°55'N (2) to 83°41-42'W & 26°35'N (2) to 83°44'W & 26°23'N (2) to 83°44'W & 26°09'N (2).

ROFFS™ Hours: Mon – Fri. 9:00 am – 7:00 pm EDT (sometimes later based on demand) with analysis order deadline before 3pm. We are now open on Saturdays 9AM to 4PM (sometimes we close earlier based on demand) analysis order deadline is 9:00am on Saturday. *Thank you for not sharing this analysis with non-paying anglers.* Remember you can order and/or purchase your fishing analyses from our website (<http://www.roffs.com/>) or by email (fishing@roffs.com). Verbal updates are free while on the water between 10:30 AM and 11:59 AM (eastern time).

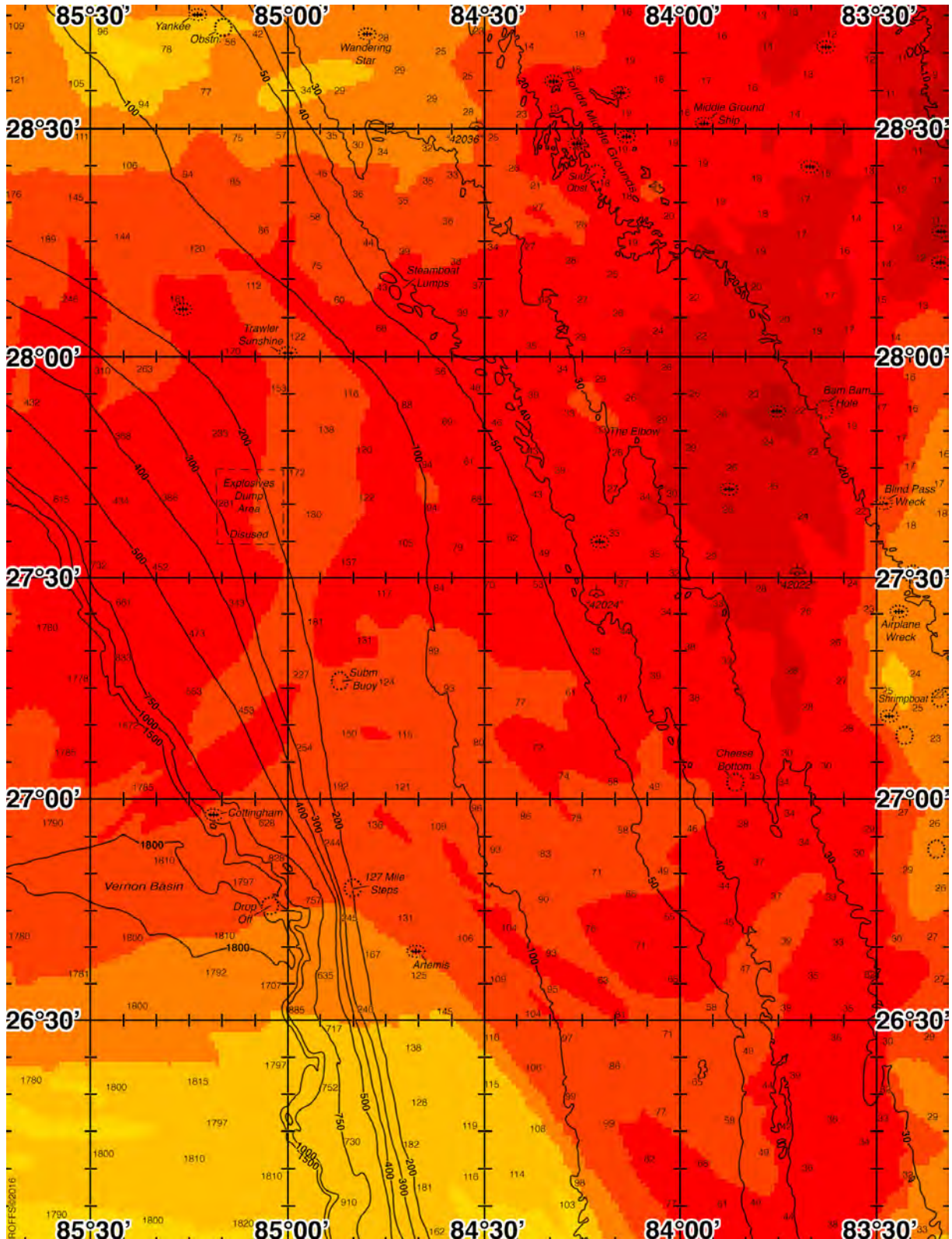






FATHOM SCIENCE

SST FORECAST for TOMORROW MORNING FISHING





FATHOM SCIENCE

OCEAN COLOR/CHLOROPHYLL FORECAST for TOMORROW MORNING

